

Sirius

Master Video Management System
Master Analytic Platform
C3 Systems

Control.
Analyze.
Resolve.

empowering solutions of tomorrow

nete²

Meet The Sirius Suite

Overwhelmed by multiple security systems? Experience the power of an all-in-one solution with Sirius.

All the essential features of agnostic video surveillance, designed for your effortless use, with AI-driven insights.

One System, Total Control



Sirius Master Video Management System (MVMS)

Sirius MVMS integrates secure video distribution with AI-enhanced capabilities, offering automated incident detection, behavioral analyses, object recognition, and instant alerts.

This reduces operational complexities by automating routine tasks, minimizing manual intervention, and enabling faster, smarter decision-making, simplifying both management and monitoring.

Sirius Master Analytics Platform (MAP)

Sirius MAP seamlessly unifies third-party sensors, video feeds, and data systems with AI-powered features such as geofencing, crowd counting, and action recognition. It provides real-time, intelligent insights that enhance operational efficiency - automatically detecting specific actions, analyzing behaviour patterns, and optimizing resource allocation. **Sirius MAP** consolidates it all, delivering you the best-in-class analytics to empower smarter operations.

Sirius Command, Control & Communication (C3)

The **Sirius C3** enables real-time video and data monitoring, reinforced by AI to deliver predictive insights and context-rich information.

This improves sensemaking, reducing human errors and facilitating more accurate decisions. As **Sirius C3** continuously evolves, it grows alongside its users and operational needs, ensuring long-term adaptability and relevance.

Sirius Master Video Management System

Beyond Silos: Secured Video Sharing Across Agencies

Introducing **Sirius Master Video Management System (MVMS)** – a cutting-edge solution that revolutionizes how you distribute and view IP-based videos across secure networks.

Leveraging AI-powered capabilities, our advanced platform streamlines video organization, automates management, and enhances monitoring efficiency, offering unrivalled simplicity and efficiency for large-scale systems.

Say goodbye to complex video management and resource-intensive operations. With AI-driven insights and contextual alerts, **Sirius MVMS** provides security teams with immediate, **actionable** notifications for faster, more informed, and **proactive decisions**.

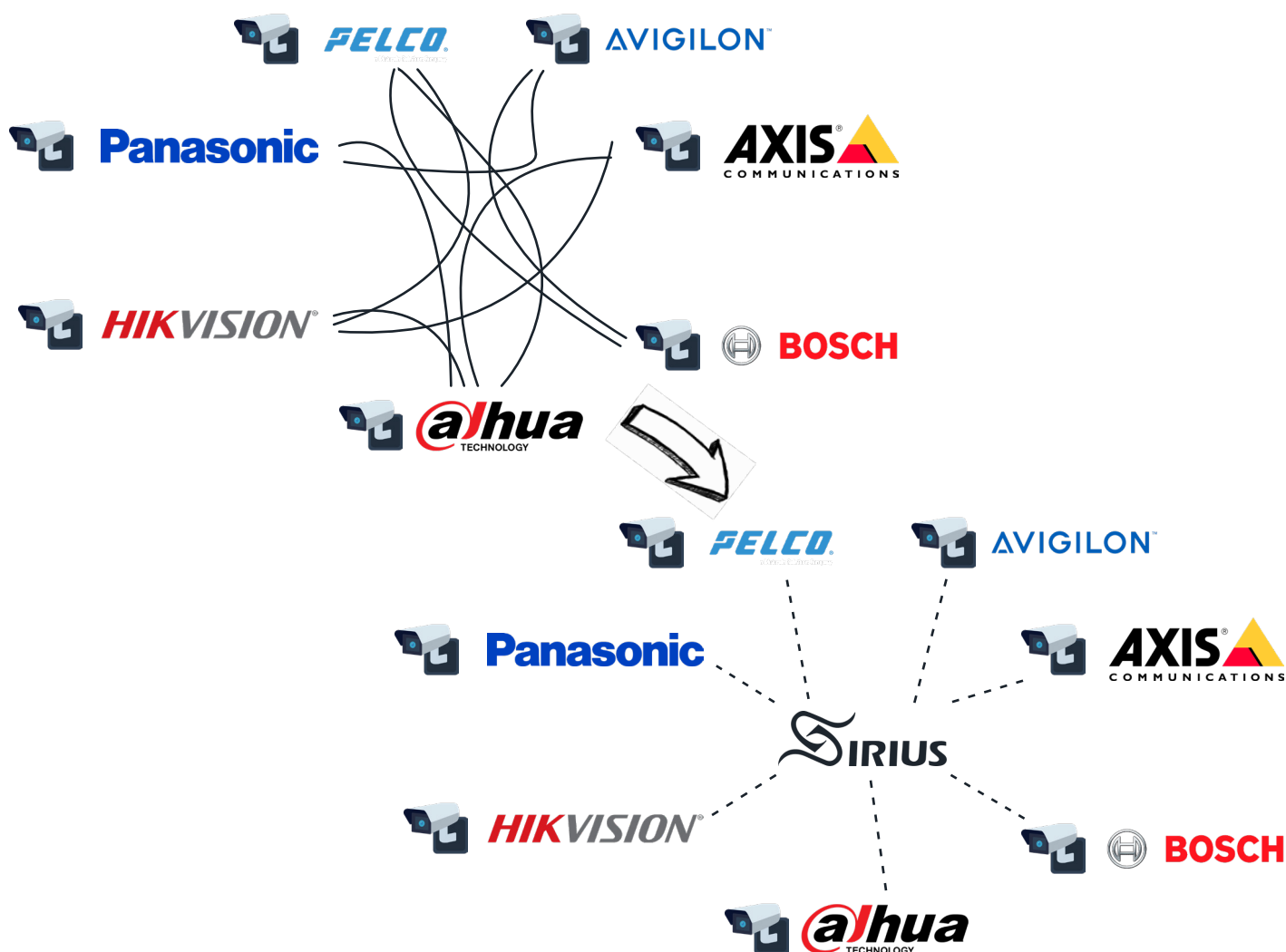
Stay ahead of threats, not behind.



Eliminate Integration Pains. Streamline Inter-Agency Cooperation

Inter-agency collaborations for video surveillance often face complexities due to incompatible platforms, requiring complex integrations, middleware development, and network configurations – with cybersecurity compliances further amplifying these challenges.

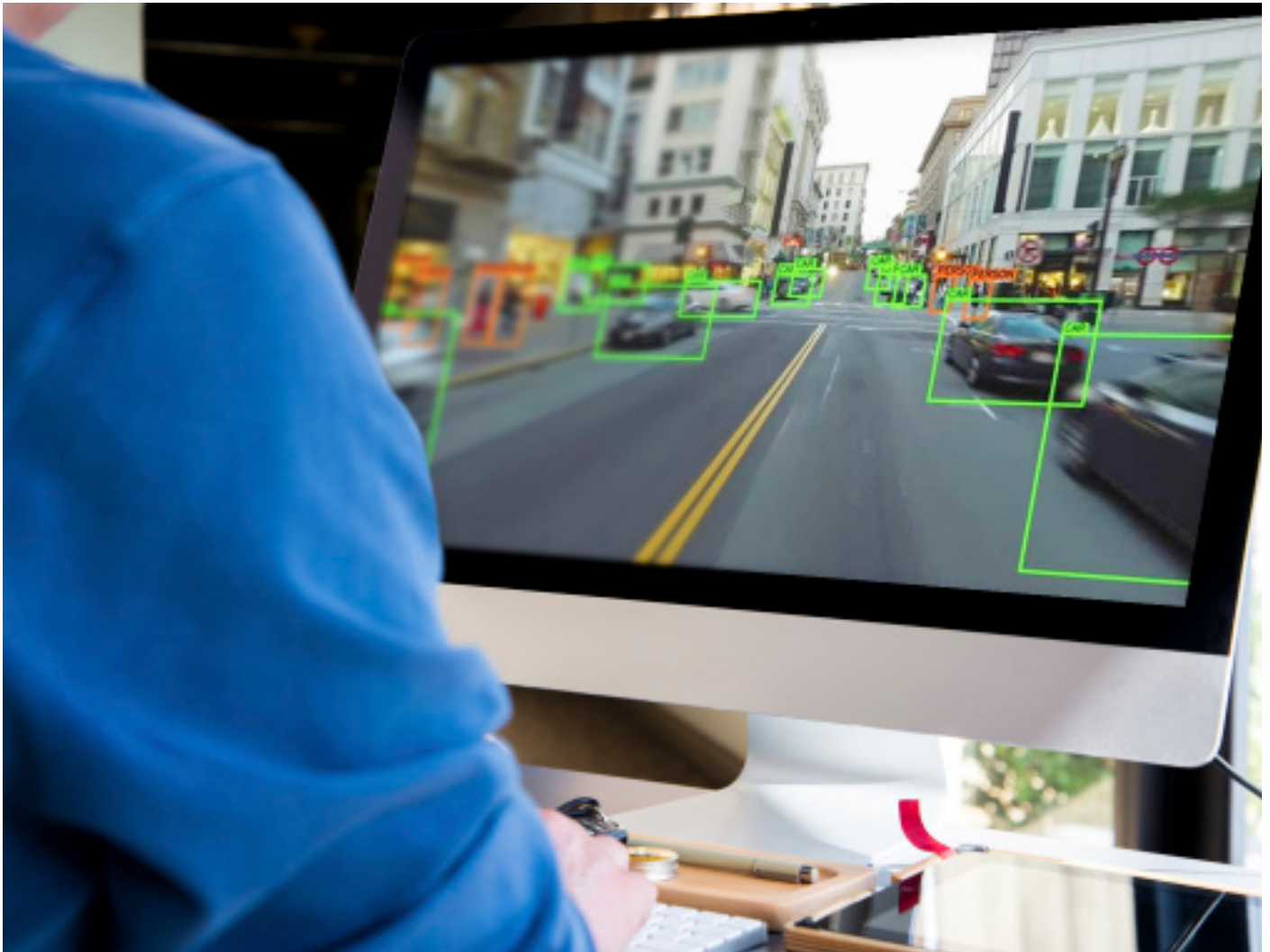
This creates hurdles for both initial setup and long-term maintenance, with fully networked environments multiplying these issues exponentially!



With **Sirius MVMS**, you can seamlessly unify multiple video management systems into a single platform. Effortlessly collaborate across agencies, regardless of existing infrastructure.

Exchange multiple, concurrent video feeds with low latency, easily request for different feeds live across agencies, control feeds via pan-tilt-zoom functions, and access archived videos directly from source VMS/NVRs - all through a unified MMI.

Sirius Master Analytics Platform



Synthesize. Analyze. React Faster.

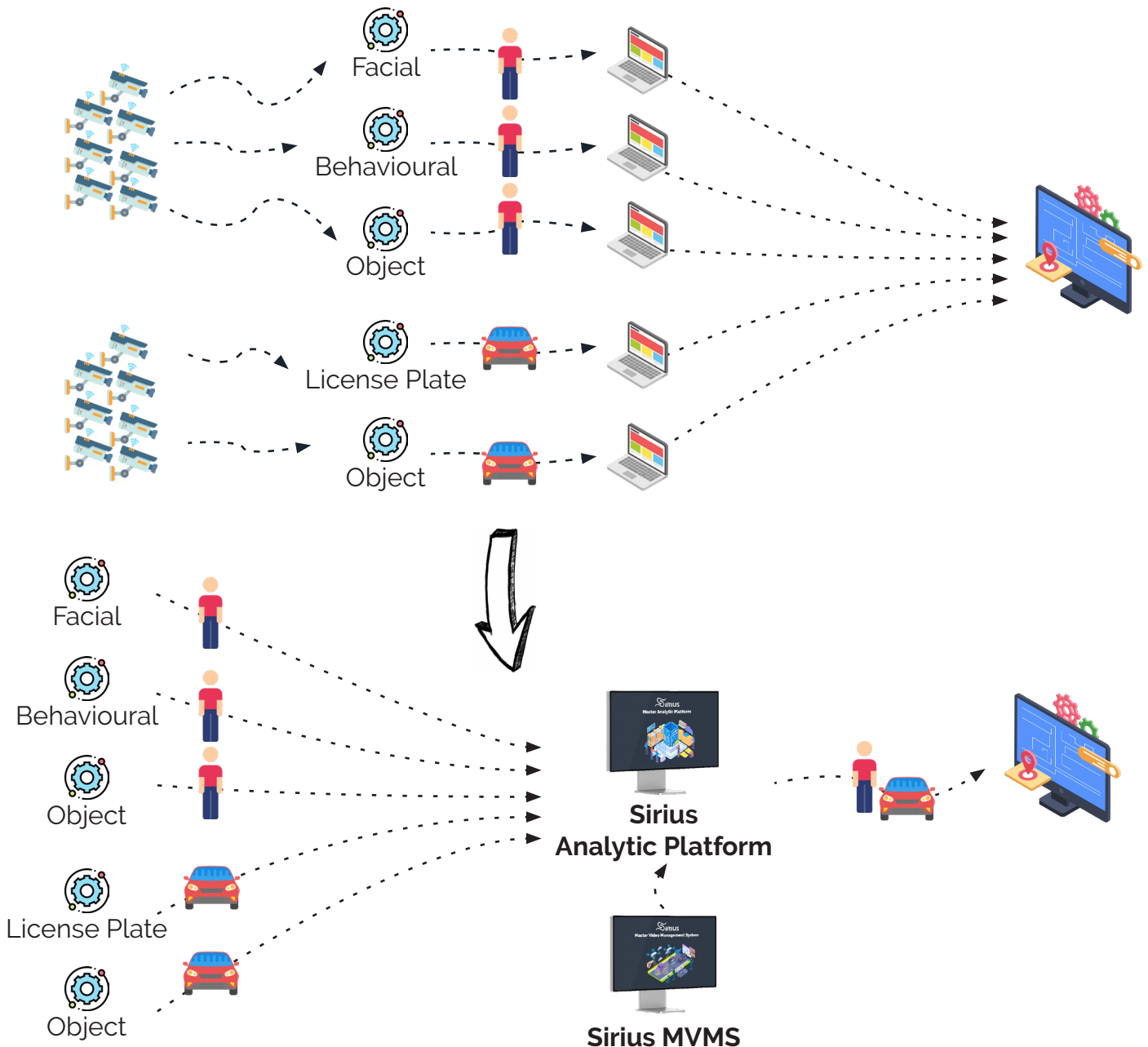
The **Sirius MAP** streamlines complex workflows by integrating diverse analytics engines, with AI-powered tools, into a unified MMI. **System-agnostic**, it simplifies implementation, while features like **geofencing**, **crowd counting**, and **action recognition** enable faster, data-driven decisions - empowering proactive responses.

Unified Insights & Native Sensor Access

Direct integration with video exchanges (e.g., Sirius MVMS) provides native, intuitive access to all connected sensors and video feeds. This delivers a **holistic view** of your environment, while AI features, like **Re-Identification**, enhances your ability to track and analyze movement, granting more effective analyses and responses to potential security risks.

Disconnected Systems. Fragmented Insights.

Multiple systems analysing data in isolation requires individual, separate connections to camera pools, creating silo-ed results and floods of unstructured data - Making management an unnecessary burden.



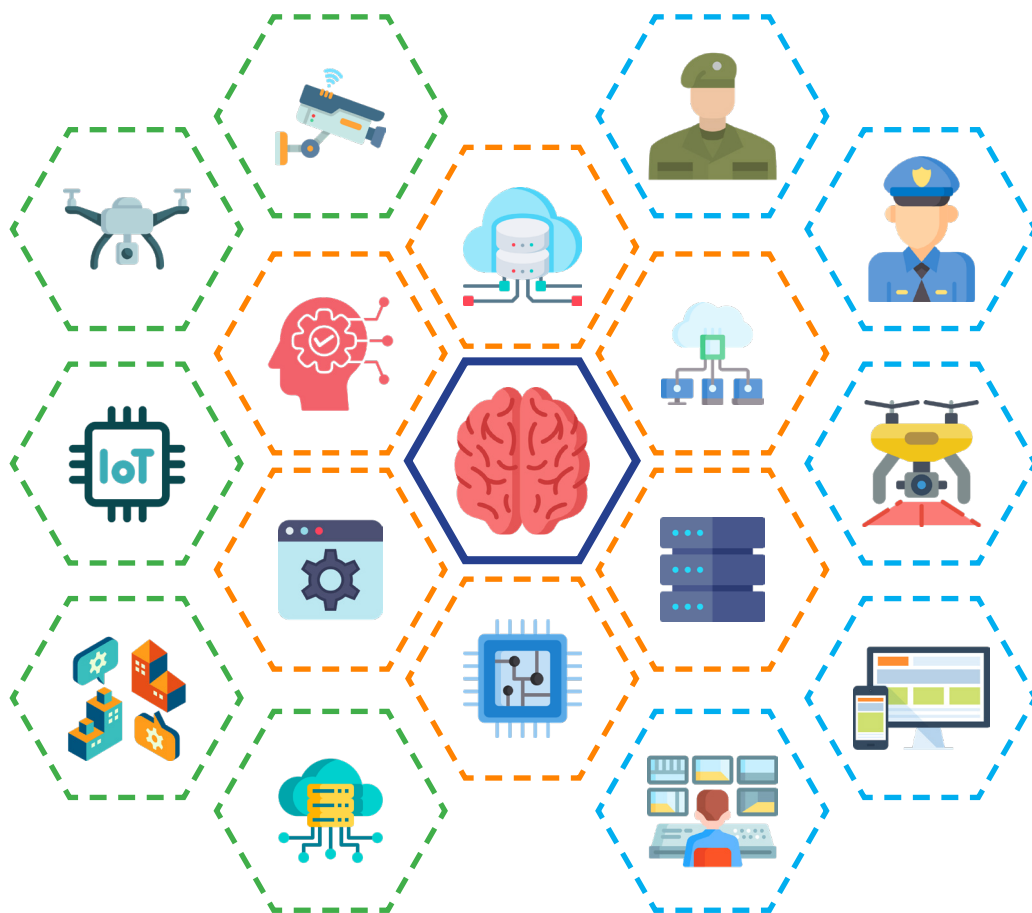
Sirius MAP simplifies user experience and operational workflow by connecting diverse systems into a single pool of video sensors, enabling rapid use of various analytics engines. AI-driven results are further correlated and filtered, delivering only **qualified data** and **actionable insights** to users.

Sirius C3 System

Navigate the Data Deluge.

Without real-time monitoring, sensemaking and insights, the vast mountains of data from cameras, sensors, and systems become overwhelming.

Sirius C3 brings clarity to the chaos, unifying vital, time-sensitive information from data sources and delivering **context-rich, actionable insights** in a clear, simplified format. Operators gain a clearer overview of unfolding situations, allowing for quicker, more confident decision-making.



Unprecedented Simplicity. Accelerated Decisions.

Our human-centric design renders ease to even the most complex situations, enabling first responders to appraise and grasp circumstances promptly, before making contact. AI-driven processes and native integrations with MVMS and analytics platforms **automate routine tasks**, provide **instant notifications**, and **supplements decision-making processes**, freeing operators to focus on critical matters.

Deployable in cloud or on-premise setups, **Sirius C3** delivers next-level flexibility and ingenuity for demanding, 24/7 operations.



Get In Touch



+65 6723 6363



contact@nete2asia.com



www.nete2.io



#06-01 The Xperience

#06-06 The Sandbox

152 Paya Lebar Road, Singapore 409020